



solutions
gas and hydronics

Company Presentation

SUMMARY

Who we are	03
Products	12
Some of the projects	18
Contact	24

Who we are

QOC Solutions is an Italian company that designs, manufactures, and sells quick opening closures for industrial plants in the Oil & Gas, petrochemical, chemical, food, manufacturing and research sectors. Thanks to a team who has over twenty years of experience in the quick opening closures field, we are able to offer trustworthy products that can simplify and make safer the relationship between worker and plant.



Our company guarantees customized solutions that are tailor-made for the customers' needs. Each client can count on a product designed and created to suit perfectly their industrial plants, that is easy to use even by one man alone, that can ensure a quick and safe access to any type of equipment under pressure or not.





QOC Solutions' quick opening closure installations

QOC Solutions' quick opening closures can be installed on various type of industrial equipment. In particular, our products can be used for:

- Pressure vessels and atmospheric tanks
- Pig launching and receiving traps
- Vertical and horizontal filters
- Manholes
- Handholes
- Separator filters
- Three phase filters
- Mini reactors
- Autoclaves
- Timed chain conveyors

Our clients' satisfaction is important to us and that is the reason why we provide one-on-one consultations before taking upon the manufacturing process and a prompt customer service.



SBS GROUP

1994
YEAR OF ESTABLISHMENT

>500
EMPLOYEES

155 MIL/€
2020 TURNOVER


Consumer
Electronics


Industrial
Components


Home
Automation


Industrial
Automation

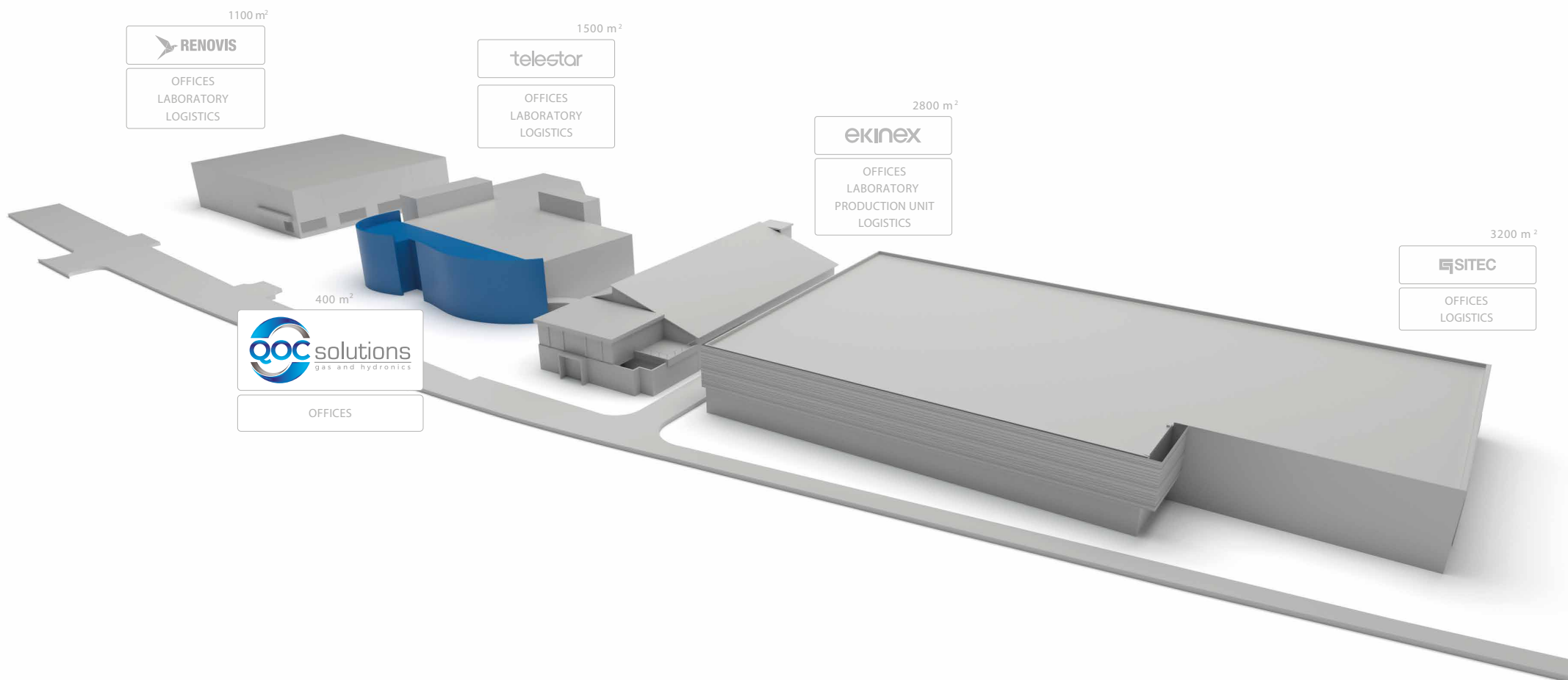

Industrial
Electronics


Support
Services


Energy
Efficiency


Industrial
Components


Gas &
Hydronics



10 valid reasons to choose our Quick Opening Closures

- 1 - The safety system with an incorporated safety device for a visual and audio warning, and possible discharge in a safe area.
- 2 - The special lip seal gasket that ensures a perfect seal
- 3 - The device to open/close the cover (hinge/davit)
- 4 - The possibility of Partial Asme Stamp certification
- 5 - The certified hydraulic test performed on samples
- 6 - The possibility of automatic movement
- 7 - The possibility of hydraulic movement
- 8 - The quality certification databook
- 9 - The 24 months warranty starting from the delivery date
- 10 - The installation and after-sales assistance

QOC Solutions' reference fields

QOC Solutions is a company that designs, manufactures and sells quick opening closures for businesses specialized in many different fields. Our team is composed of engineers and specialized professionals who work to provide to the clients customized quick opening closures that guarantee a rapid and safe access to every kind of equipment, pressurized or not. Moreover, QOC Solutions doesn't only manufacture products but offers also consultations and technical support to the most important companies on a national and international scale that work in the field of Oil&Gas, food sector, manufacturing, chemical, petrochemical and of research.

QOC Solutions' products are developed and manufactured in Italy

QOC Solutions supports the idea of a product that includes, as fundamental elements

- 1 - easy to use
- 2 - movement carried out by one man
- 3 - immediate understanding of the operation
- 4 - opening / closing speed
- 5 - balanced and intelligent application of technology



QOC SOLD
IN 2019

100

COUNTRIES WHERE WE
INSTALLED PRODUCTS

10

SALES GROWTH 2018 - 2019

+250%

47%
EUROPE



53%
ITALY



 Countries where QOC products were sold

01 Engineering.

QOC Solutions' quick opening closure are designed and manufactured in compliance with the relevant regulations referred to the vessel (for example Code ASME VIII Div. 1, Div. 2, Directive 2014/68/CE (PED), etc..) and verified through the most modern calculation software.

02 Quality.

All projects are assessed and tested to guarantee the quality and safety of the product.

Businesses that are looking for a helping hand to increase their products performances and to improve the safety level of the workers will find in QOC Solutions the ideal partner.

The continuous pursuit of better and improved solutions makes the company flexible, versatile, and able to adapt its products to many different industrial sectors.

03 Safety.

All QOC Solutions' quick opening closures have a safety device designed and built according to ASME VIII div.1 UG-35 and ASME VIII div.2 Par. 4.8 which provides the operator with an audio warning in case of residual pressure inside the appliance. Safety devices for visual warning and for the discharge of gas or acidic residues in a safe area away from the operator can be included.

QOC Solutions' warranties

QOC Solutions performs functional tests on all products and also there are hydraulic tests on a sample of product size/range. It is also important to underline that our products can be certified ASME U-Stamp and U2-Stamp with issuing of the Partial Data Report stamped by ASME Inspector or certified PED according to the Pressure Equipment Directive 2014/68 / EU (PED) with the issuing of a technical dossier.

Qoc Solutions' quality and certifications

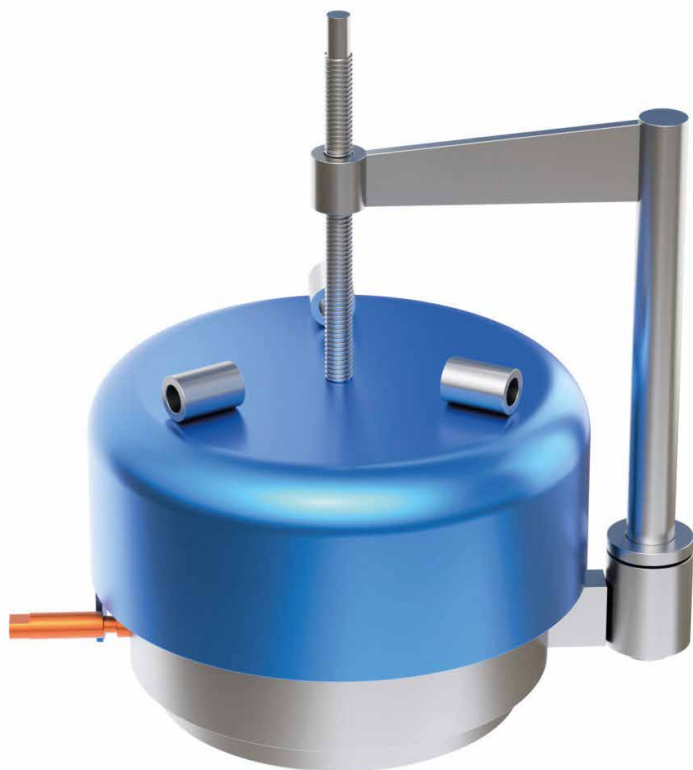
All the materials used are certified according to EN 10204 3.1 / 3.2 /2.2 (according to necessities) and undergo strict quality controls such as PT-VT-MT-UT SNT TC 1A qualifications EN-473. Non-destructive tests MT-PT-UT are performed directly by our qualified internal staff and controls on welding are made through the collaboration of welding inspectors our partners.

Materials

QOC Solutions' Quick Opening Closures can be made of:

- 1 - Carbon steel
- 2 - Stainless steel
- 3 - Duplex or super duplex

PRODUCTS



01 Threaded quick opening closures (QOC THD).

The threaded quick opening closures (THD) are recommended for using on equipment with dimension starting from DN 2" to DN 12"; with recommended ratings up to ANSI 600.

This type of QOC is activated by screwing/unscrewing the threaded cover/cap to the hub welded to the vessel.



02 Quick opening closures with jaws.

The recommended sizes for use of these type of quick opening closure go from DN 6" up to DN 72" with suggested rating up to ANSI 2500.

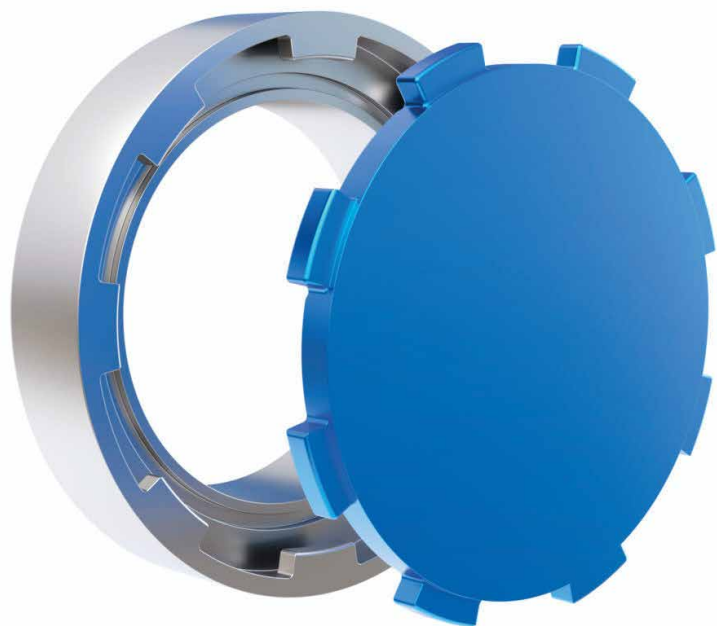
The quick opening closures with jaws is activated by screwing/unscrewing a threaded operating rod that moves the jaws allowing the release of the cover for the opening.



03 Quick Opening Closures with sectors.

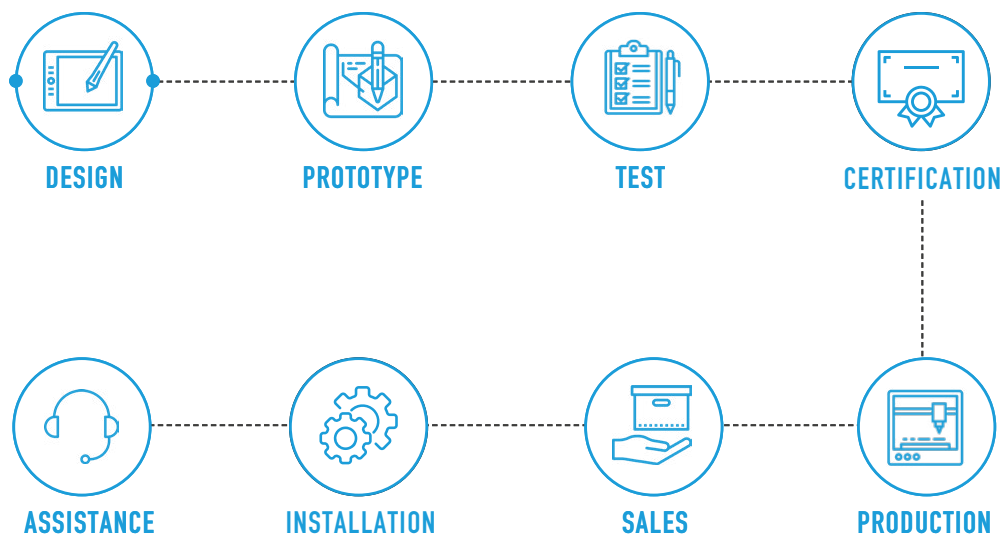
The quick opening closures with sectors are composed of two parts, a hub and a cover. This type of QOC is activated by the unlocking of the sector's system which allows the movement of the cover.

We recommend the use of the Quick Opening Closures with sectors on equipment with sizes that start from DN 6" and go up to DN 68". They are suitable for ratings up to ANSI 2500.



04 Quick opening closures with tooth.

QOC Solutions offers manual quick opening closures with tooth as well as automatic. This type of QOC gets activated through the rotation of a system of teeth which allows the fast opening. The manual rotation uses a rack system, while the automatic one uses a hydraulic piston and pump system. The recommended sizes for our quick opening closures with tooth go from DN 6" to DN 46", and the specially recommended rating is ANSI 150, even if typology can be applied to rating ANSI 600.



A large offshore oil platform, identified as 'CARIBALDI K', is shown in the middle of the ocean. The platform is a complex of steel structures, including a tall central derrick, various pipes, and a long crane arm extending to the left. It is supported by several legs in the water. The sky is overcast and grey, and the water is dark blue with some whitecaps in the foreground.

SOME OF THE PROJECTS



DN - Design Pressure
16"/900 – 120 barg

Final installation
Algeria

Project Ref.
Pig Launcher and
receiver traps



DN - Design Pressure
32"/150 – 12 barg

Final installation
EAC - PT Pertamina - Armenia

Project Ref.
Filters



DN - Design Pressure
20"/300 – 30 barg

Final installation
Pig Launcher and Receiver
Pipeline (Shaikan Oil Field)
Iraq

Project Ref.
Export Pipeline System
from GKPI/PF1 to RETM



DN - Design Pressure
12"/1500 – 160 barg

Final installation
Italy

Project Ref.
Pig Launcher and Receiver Traps



DN - Design Pressure
16"/150 – 5 barg

Final installation
Ammonia Plant Energy
Improvement - YARA -
Ferrara - Italy

Project Ref.
Cooling Water Service



DN - Design Pressure
12"/150 – 16 barg

Final installation
Sarir Gas Utilization J-22
Libya

Project Ref.
OKP037 - Pig traps Launcher
and receiver



DN - Design Pressure
34"/600 – 99.9 barg

Final installation
South America

Project Ref.
Coalescent Filters



DN - Design Pressure
10"/600 – 85 barg

Final installation
Snam Rete Gas
Italy

Project Ref.
National gas reduction
stations



DN - Design Pressure
42"/600 – 58 barg

Final installation
Dubai - UAE

Project Ref.
Filters – CAPEX 2019-MV



DN - Design Pressure
32"/600 – 66 barg

Final installation
Campos Basin - Brazil

Project Ref.
Anna Nery FPSO
Marlim 2 Gas Treatment and
Utilities offshore



DN - Design Pressure
34"/300 – 47 barg

Final installation
20km southwest of Basrah,
Southern Iraq

Project Ref.
Zubair Depot and Shuaiba
Refinery – Iraq



DN - Design Pressure
36"/300 – 47 barg

Final installation
20km southwest of Basrah,
Southern Iraq

Project Ref.
Pipeline Launching & Receiving
Scraper Traps Station



DN - Design Pressure
12"/150 - 12 barg

Final installation
Porto Marghera - Italy

Project Ref.
Pig Launcher and Receiver Traps



DN - Design Pressure
40"/150 - 7,5 barg

Final installation
Gas knock out drum at
north station - Iraq

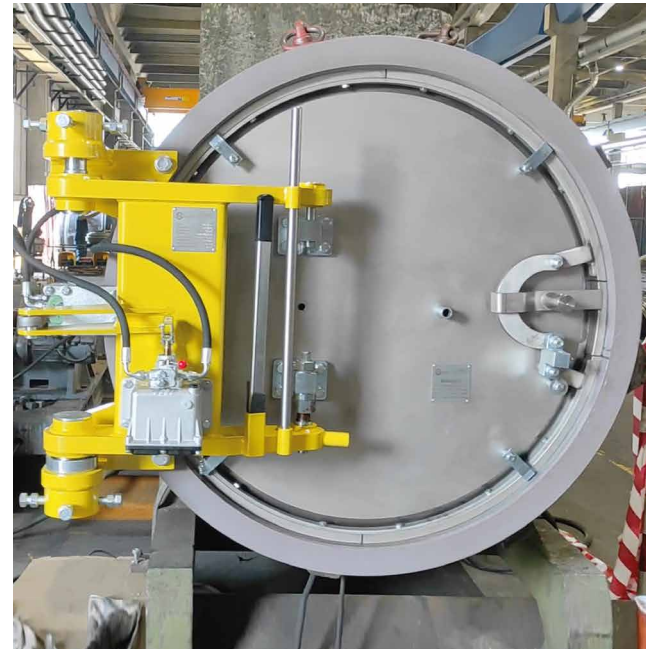
Project Ref.
Sour gas pipeline from north
station to CPS I VIA CPS II



DN - Design Pressure
34"/300 - 45 barg

Final installation
Acajutla - El Salvador

Project Ref.
Energia del Pacífico project



DN - Design Pressure
46"/600 - 90 barg

Final installation
Israel

Project Ref.
Israel Natural gas lines



QOC Solutions' Swing Bolt Quick Opening Closures

QOC Solutions' Swing Bolt Quick Opening Closures are designed expressly for nominal pressure applications. Less expensive and much more satisfactory than blind flanges.

They are suitable for:

- Manways for storage tanks
- Mixing Vessels
- Vertical and horizontal filters
- Separators
- Caps for inspection ports and other access openings on towers and reactors
- Handholes on processing equipment and medical or laboratory apparatus such as hyperbaric chambers

DN - Design Pressure
20"/300 – 25 barg

Final installation
TarragonaSpain

Project Ref.
Industrial complex for the manufacture of
olefins and ethylene derivatives



QOC Solutions S.r.l.

Via Novara, 35 - 28010 Vaprio d'Agogna (NO)

Phone. +39 0321 1828960 | Fax. +39 0321 966997

Vat N. 02563630033

www.qocsolutions.com